



ANDROX

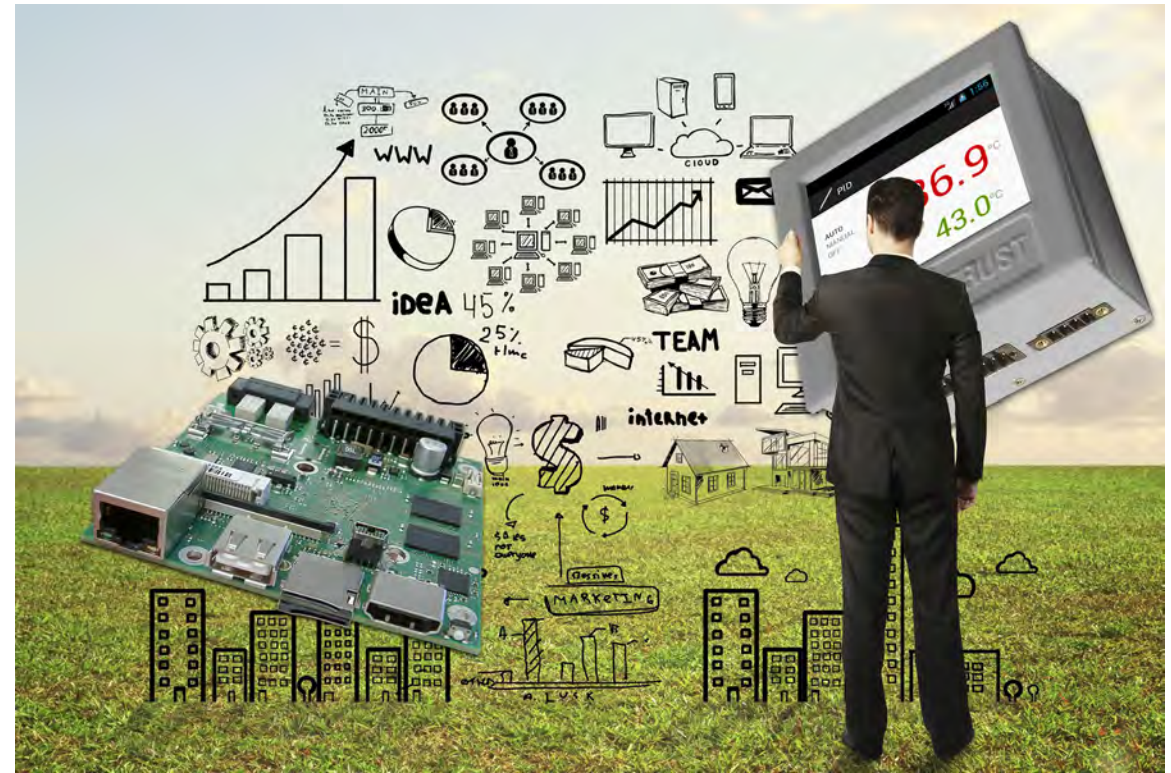
EM TRUST
systems you can trust

1/4 DIN

APPLICATIONS

ANDROX[®], your Android based intelligent display unit, connecting multiple facilities to your fingertips. The perfect Plug&Play system solution, especially designed for low-power and noiseless applications since no fans or other rotating devices are used. It is a german engineered and high quality industrial computer system, offering the highest performance in tough environments.

- _ Home Automation
- _ Industrial Control & Automation
- _ Measurement & Control
- _ Infotainment
- _ Point of Sale
- _ Human Machine Interface



Building management system to automate and control your environment.



Save energy and protect your environment by optimizing all processes automatically.



Watch your surrounding areas with a real-time video streaming on an external high resolution monitor.



Use it as your central hub for communication with electric facilities.



Simple operation via integrated 3.5" Touchscreen.



Save all information and measures on implemented SD card.



15 years long life support¹

E.E.P.D. 
...just embedded!

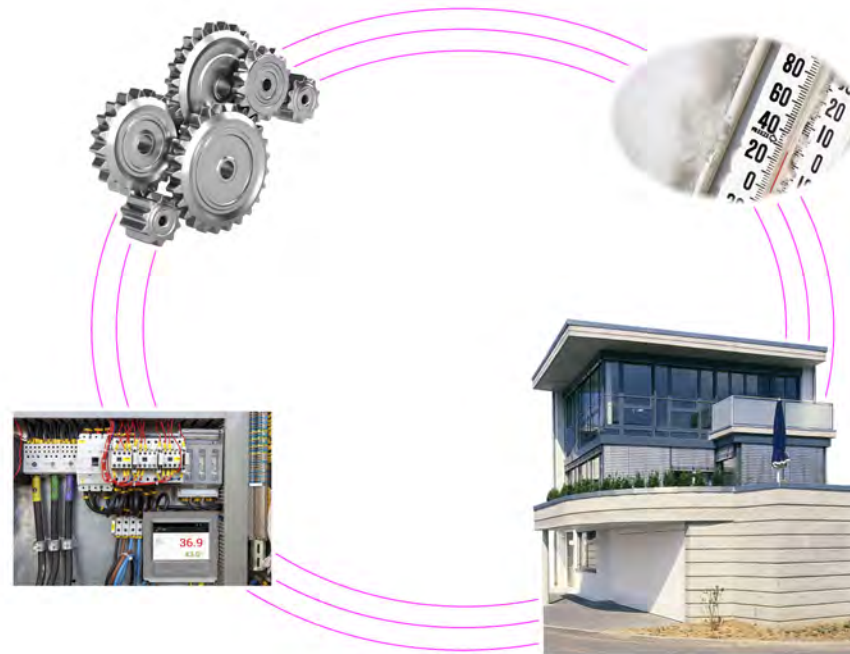
SPECIFICATIONS

CPU	NXP i.MX6 processors ¹
Max. memory	1 GB DDR3 soldered memory onboard
Gigabit Ethernet	1 RealTek RTL8211CL ²
WiFi/BT (OPTIONAL)	802.11 AC with diversity/ Bluetooth Version 5
SD-Card	1 MicroSD-Card socket
USB port	1 USB 2.0 host 1 USB 2.0 client
Serial port	1 RS-232 1 RS-422/485
CAN port	2 ports, 1 Mbps per port
TFT-Color-Display	3.5" TFT, QVGA 320 x 240 px
Touchscreen	Resistive
HDMI connector	1 port, up to 1920 x 1080 @ 30 Hz
GPIO	2 In, 2 Out (max. V _{in} , open drain)
Relay switch	2 normally open, max. 2 A, max. 60 V
Temperature measurement	1 PT100 PT1000 RTD Thermocouple
Power supply	Min. 8 V / Max. 28 V (DC), Max. 2 A
Fanless	Designed for fanless operation
Max. operating temp.	0 °C to +60 °C ambient commercial grade
Max. storage temp.	-20 °C to +85 °C ambient commercial grade
Max. rel. humidity	95 % @ 40 °C, non-condensing
Housing	Aluminum case with ABS-C front cover
Protection	IP65 frontside
Mounting	Flush mount or hat rail
Dimension approx.	96 x 96 x 47 mm
Weight approx.	300 grams + options
Conformity	CE, ROHS, REACH
OS support	Linux (Yocto Project w/ FSL Community BSP 2.3) Android upon request

¹ 15 years availability according to CPU manufacturers specification

² GbE port currently limited to 480 MBit/s

1/4 DIN CONTROLLER FLEXIBLE, INTELLIGENT AND POWERFUL



OVERVIEW

The ANDROX® Android based intelligent display unit is powered by proven technology, including the NXP i.MX6 Solo processors up to 800 MHz. The touchscreen allows userfriendly navigation. Digital IO, temperature sensor and serial interfaces allow multiple types of industrial connections.

SUMMARY

- ▶ Fanless operation
- ▶ Full color display with integrated touchscreen
- ▶ Commercial temperature

Ordering Code System	Description	Type
ANDROXA	1/4 DIN	i.MX6 Solo / 800 MHz / 1C / 1T / 1 GB memory down

Ordering Code CPU	Description
WBT	WiFi / BT card
LNX	Linux Yocto Project

The information contained in this document has been carefully checked and is believed to be reliable. However, E.E.P.D. GmbH makes no guarantee or warranty concerning the accuracy of said information and shall not be responsible for any loss or damage of what ever nature resulting from the use of, or reliance upon, it. E.E.P.D. does not guarantee that the use of any information contained herein will not infringe upon the patent, trademark, copyright or other rights of third parties, and no patent or other license is implied hereby. ANDROX® is a registered trademark of the E.E.P.D. GmbH. NXP® and NXP® logo are trademarks or registered trademarks of NXP® Semiconductors or its subsidiaries in the Netherlands and other countries.

This document does not in any way extend E.E.P.D.'s warranty on any product beyond that set forth in its standard terms and conditions of sale. E.E.P.D. reserves the right to make changes in the products or specifications, or both, presented in this publication at any time and without notice.

LIFE SUPPORT APPLICATIONS

E.E.P.D.'s products are not intended for use as critical components in life support appliances, devices or systems in which the failure of a E.E.P.D. product to perform could be expected to result in personal injury. All mentioned trademarks are registered trademarks of their owner.

© 2019 by E.E.P.D. GmbH. All rights reserved. March 18th 2019 – Version 2.1



**E.E.P.D. Electronic Equipment
Produktion & Distribution GmbH**

Gewerbering 3

85258 Weichs - Germany

Phone +49 8136 2282-0

Fax +49 8136 2282-109

Internet: www.eepd.de

E-Mail: sales@eepd.de