



## APPLICATIONS

The **EM MODULE MMCM** is the perfect MiniCard carrier module solution. It is a german engineered and high quality USB extension module, offering the highest performance in tough environments.

- \_ Rugged Industrial Module
- \_ Automatic Control Panels
- \_ Information Systems
- \_ Measurement & Quality Control
- \_ Automotive

### MINI PCIE (USB ONLY)



Connect up to seven modules per TB-M/TB-H to your system.



Small installation depth.



Connect your Mini-PCIE board to USB. For various different applications such as I/O, CAN, 2G, 3G, 4G and much more.



Extreme temperatures from -40°C to +85°C are supported.



Supports fast USB 2.0 boards.

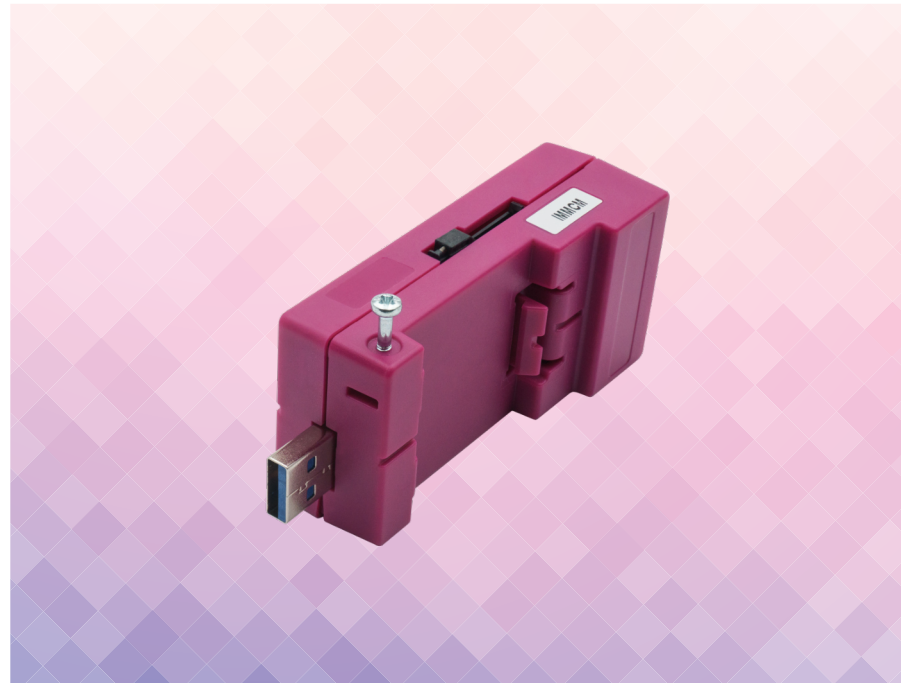


Designed for hat rail / DIN rail mounting.

## SPECIFICATIONS

MiniCard	MiniCard carrier module for various USB modules with Mini-PCle form factor and USB only connectivity
SIM card	1 SIM card socket for compatible cellular modem cards
USB client port	1 USB 2.0   USB 1.1   Type A
Power supply	USB VCC (+5 V supply, current limited to 500 mA)
Fanless	Designed for fanless operation
Max. operating temp.	-40°C to +85°C ambient
Max. storage temp.	-40°C to +85°C ambient
Max. rel. humidity	95% @ 40°C, non-condensing
Housing	ABS-PC
Mounting	TB-M and TB-H module mounting Hat rail Stand alone
Dimensions approx.	93 x 39 x 27 mm
Weight approx.	40 grams
Conformity (adapter only)	CE, ROHS, REACH
OS support	Depends on Mini-PCle module used
Control Type	Virtual Com Port

## DIGITAL AND ANALOG ALL COMBINED IN ONE MODULE



Ordering Code System	Description	Type
IMMCMAA0	USB Module	MiniPCle USB only module carrier Rail Mounting   GREY
IMMCMAA30	USB Module	MiniPCle USB only module carrier Rail Mounting   MAGENTA

## OVERVIEW

The EM MODULE MMCM is the perfect USB to Mini-PCle adapter for USB only applications. It is designed to connect your own USB connected Mini-PCle board and provide easy installation as well as SIM Card access for compatible cellular boards.

## SUMMARY

- ▶ USB 2.0 to Mini-PCle, USB only, adapter
- ▶ SIM card socket
- ▶ Custom options available



The information contained in this document has been carefully checked and is believed to be reliable. However, E.E.P.D. GmbH makes no guarantee or warranty concerning the accuracy of said information and shall not be responsible for any loss or damage of what ever nature resulting from the use of, or reliance upon, it. E.E.P.D. does not guarantee that the use of any information contained herein will not infringe upon the patent, trademark, copyright or other rights of third parties, and no patent or other license is implied hereby. ENVADER® is a registered trademark of the E.E.P.D. GmbH. Intel, Celeron, Core and the Intel logo are trademarks or registered trademarks of Intel Corporation or its subsidiaries in the United States and/or other countries. Windows is a registered trademark of Microsoft Corporation in the United States and/or other countries. Linux® is the registered trademark of Linus Torvalds in the U.S. and other countries. This document does not in any way extend E.E.P.D.'s warranty on any product beyond that set forth in its standard terms and conditions of sale. E.E.P.D. reserves the right to make changes in the products or specifications, or both, presented in this publication at any time and without notice. LIFE SUPPORT APPLICATIONS: E.E.P.D.'s products are not intended for use as critical components in life support appliances, devices or systems in which the failure of a E.E.P.D. product to perform could be expected to result in personal injury. All mentioned trademarks are registered trademarks of their owner.  
© 2021 by E.E.P.D. GmbH. All rights reserved. September 16<sup>th</sup> 2021 – Version 2.2

**E.E.P.D Electronic Equipment  
Produktion & Distribution GmbH**  
Gewerbering 3  
85258 Weichs - Germany  
Phone +49 8136 2282-0  
Fax +49 8136 2282-109  
Internet: [www.eepd.de](http://www.eepd.de)  
E-Mail: [sales@eepd.de](mailto:sales@eepd.de)