

# PROFIVE® NUCT

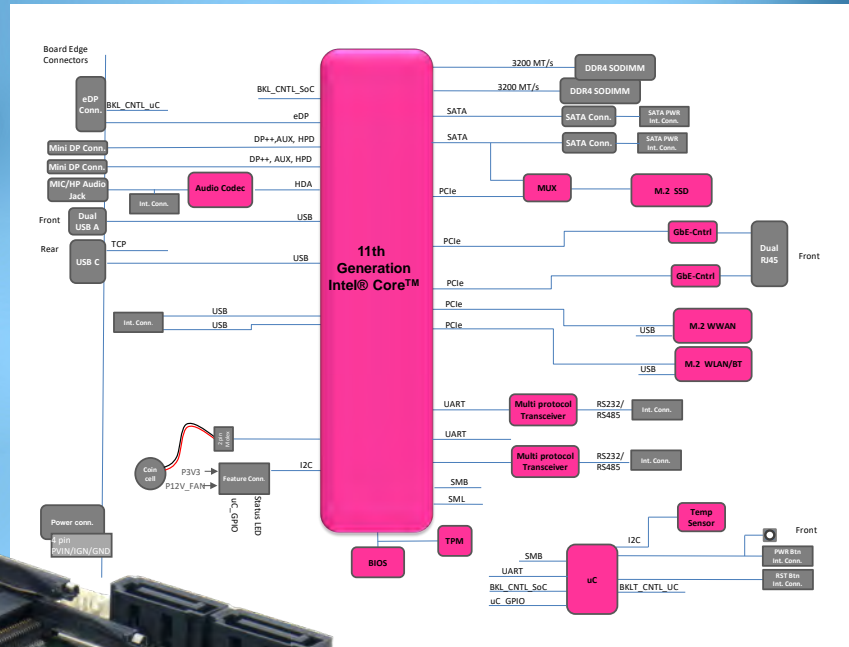


## APPLICATIONS

The **PROFIVE® NUCT** was designed as a low power eNUC board with an excellent performance-per-watt ratio and is optimal adapted for:

- \_ Rugged Industrial Systems  
no rotating parts, low power,  
extended temperature
- \_ Medical Solutions
- \_ CV Computer Vision
- \_ Robotics
- \_ Micro-Server
- \_ High-Performance Workstations
- \_ IoT  
edge / fog gateway

15 years availability according to CPU manufacturers specification



HIGH QUALITY  
MADE IN GERMANY



15 years  
long life  
support<sup>1</sup>

intel | IoT Solutions Alliance

**E.E.P.D.**   
...just embedded!

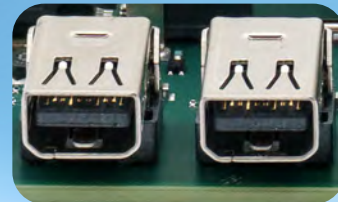
# eNUC 101x101

## SPECIFICATIONS

CPU	Intel® Celeron® Processor 6000 Series <sup>1</sup> 11th Generation Intel® Core™ i3, i5 and i7 Processors <sup>1</sup> up to 4 cores, 8 threads, max. 28W supported
Max. memory	32 GB dual channel DDR4-3200 SO-DIMM memory; industrial grade variants with In-Band ECC
Gigabit Ethernet	2 Intel® I225 with 2,5 Gbit/s with IEEE1588, TSN-support, Wake-On-Lan supported by one port
M.2 socket	1 Key B, 30 mm x 42 mm 1 Key E, 22 mm x 30 mm 1 Key M, 22 mm x 42 mm (NVMe with PCIe4)
Serial ATA	Up to 2 (6G) with separate power connector
USB ports	2 USB 3.1 Gen2 + 2 USB 2.0 (internal)
USB-C connector	1 USB-C 3.1 Gen2 or 1 DP++ output up to 4096 x 2160 @ 60 Hz
DP connectors	2 Mini-DP++ connectors up to 4096 x 2160 @ 60 Hz
eDP connector	1 eDP max. 4096x2304 @ 60 Hz with backlightcontrol
Serial port	2 RS-232/485 (HDX/FDX)
Sound	HDA with MIC in / Headphone out at a 3,5 mm Audio Jack / Line in / Line out
TPM	TPM 2.0 support (Infineon SLB 9670)
Health monitoring and management	Controllable FAN (PWM + Tacho) Hardware monitoring and watchdog
Other	Power and status LEDs, max. 4 GPIO (3.3V) and max. 3 GPIO with PWM (3,3V/50kHz)
Power supply	Min. 8 V / Max. 32 V (DC) automotive grade   KL15
Max. operating temp.	0°C to +60°C ambient commercial grade; -40°C to +85°C ambient industrial grade Depending on variant
Max. storage temp.	-40°C to +85°C
Max. relative humidity	95% @ 40°C, non-condensing
Size approx.	102 mm x 102 mm
OS support	Microsoft® Windows® 10 Microsoft® Windows® 10 IoT Enterprise Linux Ubuntu 20.04 LTS

Ordering Code CPU	Type	Max. operating temp.
NUCTA	INTC6305E / 2C / 2T / 1,8 GHz / 15W	0°C to +60°C
NUCTB	I3-1115G4E / 2C / 4T / 2,2 GHz - 3,9 GHz / 12 - 28W	0°C to +60°C
NUCTC	I5-1145G7E / 4C / 8T / 1,5 GHz - 4,1 GHz / 12 - 28W	0°C to +60°C
NUCTD	I7-1185G7E / 4C / 8T / 1,8 GHz - 4,4 GHz / 12 - 28W	0°C to +60°C
NUCTE	I3-1115GRE / 2C / 4T / 2,2 GHz - 3,9 GHz / 12 - 28W	-40°C to +85°C
NUCTF	I5-1145GRE / 4C / 8T / 1,5 GHz - 4,1 GHz / 12 - 28W	-40°C to +85°C
NUCTG	I7-1185GRE / 4C / 8T / 1,8 GHz - 4,4 GHz / 12 - 28W	-40°C to +85°C

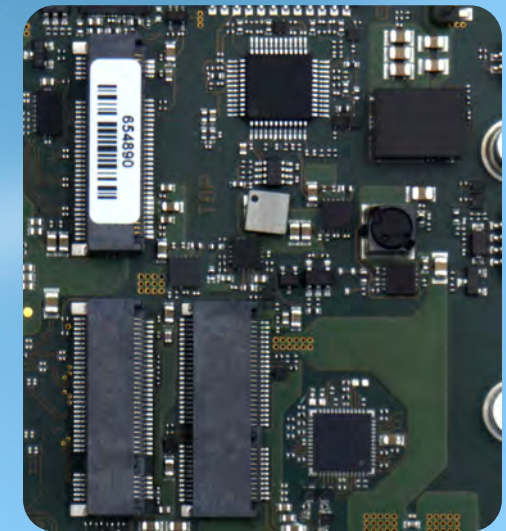
Ordering Code Main Memory	Size
4GB-NUCT	4 GB
8GB-NUCT	8 GB
16GB-NUCT	16 GB



Dual-Mini-DP-Support  
Single Display  
Max. 4096 x 2160 @ 60 Hz



Dual Gigabit Ethernet



Triple M.2 Sockets

The information contained in this document has been carefully checked and is believed to be reliable. However, E.E.P.D. GmbH makes no guarantee or warranty concerning the accuracy of said information and shall not be responsible for any loss or damage of what ever nature resulting from the use of, or reliance upon, it. E.E.P.D. does not guarantee that the use of any information contained herein will not infringe upon the patent, trademark, copyright or other rights of third parties, and no patent or other license is implied hereby. AMD and the AMD logo are trademarks of Advanced Micro Devices, Inc. Intel and the Intel logo are trademarks of Intel Corporation or its subsidiaries in the U.S. and/or other countries.

This document does not in any way extend E.E.P.D.'s warranty on any product beyond that set forth in its standard terms and conditions of sale. E.E.P.D. reserves the right to make changes in the products or specifications, or both, presented in this publication at any time and without notice.

LIFE SUPPORT APPLICATIONS

E.E.P.D.'s products are not intended for use as critical components in life support appliances, devices or systems in which the failure of a E.E.P.D. product to perform could be expected to result in personal injury. All mentioned trademarks are registered trademarks of their owner.

©2021 by E.E.P.D. GmbH. All rights reserved. March 12 2021 - Version 1.1

**E.E.P.D. Electronic Equipment  
Produktion & Distribution GmbH**  
Gewerbering 3  
85258 Weichs - Germany  
Phone +49 8136 2282-0  
Fax +49 8136 2282-109  
Internet: [www.eepd.de](http://www.eepd.de)  
E-Mail: [sales@eepd.de](mailto:sales@eepd.de)