



APPLICATIONS

The **EM® MODULE METH** is the perfect ethernet module solution. It is designed for tethered data networks possibilities. It is a german engineered and high quality USB extension module, offering the highest performance in tough environments.

- _ Rugged Industrial Module
- _ Automatic Control Panels
- _ Information Systems
- _ Measurement & Quality Control
- _ Automotive

1 GBIT



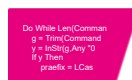
Connect up to seven modules per TB-M/TB-H to your system.



Small installation depth.



Status LED's to display various operating modes.



Easy installation. Wide software compatibility.



Full 1 Gbit speed with USB 3.0 bus support.

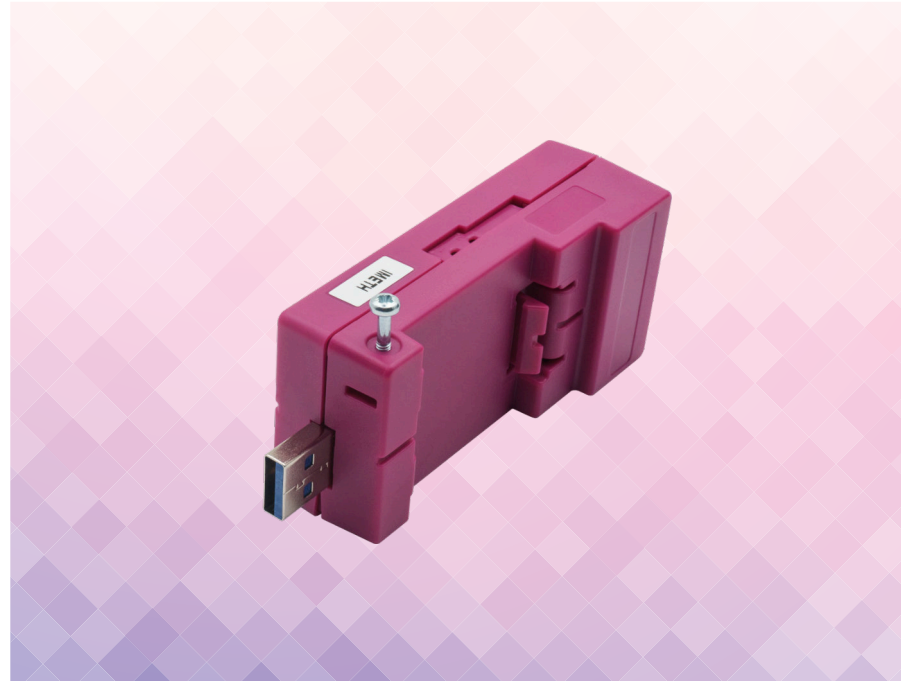


Designed for hat rail / DIN rail mounting.

SPECIFICATIONS

Gigabit Ethernet	RJ-45 connector 10/100/1000 MBit/s data rate MAC and PHY IEEE 802.3, IEEE 802.3u and IEEE 802.3ab compatible
Status LED's	3 LED's
USB client port	1 USB 3.0 2.0 1.1 Type A
Power supply	USB VCC (+5 V supply, current limited to 500 mA)
Fanless	Designed for fanless operation
Max. operating temp.	0°C to +70°C ambient
Max. storage temp.	0°C to +70°C ambient
Max. rel. humidity	95 % @ 40°C, non-condensing
Housing	ABS-PC
Mounting	TB-M and TB-H module mounting Hat rail Stand alone
Dimensions approx.	93 x 39 x 27 mm
Weight approx.	40 grams
Conformity	CE, ROHS, REACH
OS support	Microsoft® Windows® 10; Microsoft® Windows® 10 IoT; Linux Kernel 2.6.25 or later; Android
Control Type	Virtual Com Port

ADD FAST AND EASY NETWORK PORTS TO YOUR SYSTEM



Ordering Code System	Description	Type
IMETHAA0	USB Module	1x GBit/s Ethernet Rail Mounting GREY
IMETHAA30	USB Module	1x GBit/s Ethernet Rail Mounting MAGENTA

OVERVIEW

The EM® MODULE METH is the perfect USB to 1 GBit adapter for your applications, powered by proven technology.

It is designed for safety networking to control different devices, sensor units and servers.

The module is ready for USB 3.0/2.0/1.1 and supports one 1 GBase-T port.

SUMMARY

- ▶ USB to GBit Ethernet adapter
- ▶ 10/100/1000 MBit/s data rate
- ▶ USB 3.0 support
- ▶ RJ-45 connector

The information contained in this document has been carefully checked and is believed to be reliable. However, E.E.P.D. GmbH makes no guarantee or warranty concerning the accuracy of said information and shall not be responsible for any loss or damage of what ever nature resulting from the use of, or reliance upon, it. E.E.P.D. does not guarantee that the use of any information contained herein will not infringe upon the patent, trademark, copyright or other rights of third parties, and no patent or other license is implied hereby. ENVADER® is a registered trademark of the E.E.P.D. GmbH. Intel, Celeron, Core and the Intel logo are trademarks or registered trademarks of Intel Corporation or its subsidiaries in the United States and/or other countries. Windows is a registered trademark of Microsoft Corporation in the United States and/or other countries. Linux® is the registered trademark of Linus Torvalds in the U.S. and other countries. This document does not in any way extend E.E.P.D.'s warranty on any product beyond that set forth in its standard terms and conditions of sale. E.E.P.D. reserves the right to make changes in the products or specifications, or both, presented in this publication at any time and without notice. LIFE SUPPORT APPLICATIONS: E.E.P.D.'s products are not intended for use as critical components in life support appliances, devices or systems in which the failure of a E.E.P.D. product to perform could be expected to result in personal injury. All mentioned trademarks are registered trademarks of their owner.
© 2024 by E.E.P.D. GmbH. All rights reserved. March 6 2024 – Version 2.2

**E.E.P.D Electronic Equipment
Produktion & Distribution GmbH**
Gewerbering 3
85258 Weichs - Germany
Phone +49 8136 2282-0
Internet: www.eepd.de
E-Mail: sales@eepd.de