



## APPLICATIONS

The **EM BSIP-NUCT** is a german engineered and produced high quality fanless BoxPC System. Designed as a flexible low power system with an excellent performance-per-watt ratio it is optimal adapted for:

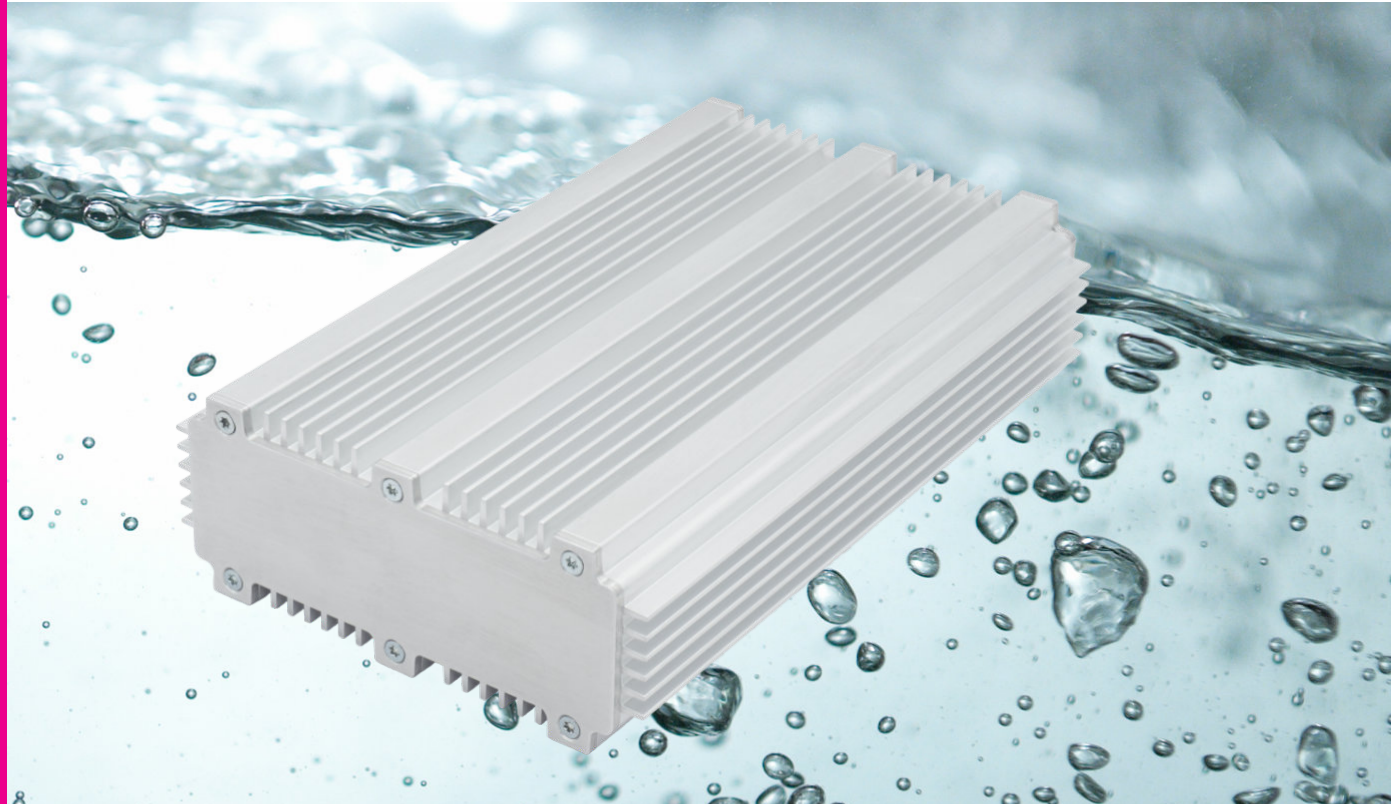
- \_ Rugged Industrial Systems  
no rotating parts, low power,  
extended temperature
- \_ Medical Solutions
- \_ CV Computer Vision
- \_ Robotics
- \_ Micro-Server
- \_ High-Performance Workstations
- \_ IoT  
edge / fog gateway

<sup>1</sup>15 years availability according to CPU manufacturers specification



## SPECIFICATIONS

|                                  |                                                                                                                                                                          |
|----------------------------------|--------------------------------------------------------------------------------------------------------------------------------------------------------------------------|
| CPU                              | Intel® Celeron® Processor 6000 Series <sup>1</sup><br>11th Generation Intel® Core™ i3, i5 and i7 Processors <sup>1</sup><br>up to 4 cores, 8 threads, max. 28W supported |
| Max. memory                      | 32 GB dual channel DDR4-3200 SO-DIMM memory; industrial grade variants with In-Band ECC                                                                                  |
| Gigabit Ethernet                 | 2 Intel® I225 with 2,5 Gbit/s with IEEE1588, TSN-support, Wake-On-Lan supported by one port                                                                              |
| M.2 socket                       | 1 Key B, 30 mm x 42 mm<br>1 Key E, 22 mm x 30 mm<br>1 Key M, 22 mm x 42 mm (NVMe with PCIe4)                                                                             |
| USB ports                        | 2 USB 3.1 Gen2 + 2 USB 2.0 (internal)                                                                                                                                    |
| USB-C connector                  | 1 USB-C 3.1 Gen2 or 1 DP++ output up to 4096 x 2160 @ 60 Hz                                                                                                              |
| DP connectors                    | 2 Mini-DP++ connectors up to 4096 x 2160 @ 60 Hz                                                                                                                         |
| Serial port                      | 2 RS-232/485 (HDX/FDX)                                                                                                                                                   |
| Sound                            | HDA with MIC in / Headphone out at a 3,5 mm Audio Jack / Line in / Line out                                                                                              |
| TPM                              | TPM 2.0 support (Infineon SLB 9670)                                                                                                                                      |
| Health monitoring and management | Hardware monitoring and watchdog                                                                                                                                         |
| Power supply                     | Min. 8 V / Max. 32 V (DC) automotive grade   KL15                                                                                                                        |
| Max. operating temp.             | 0°C to +60°C ambient commercial grade; -40°C to +85°C ambient industrial grade Depending on variant                                                                      |
| Max. storage temp.               | -40°C to +85°C                                                                                                                                                           |
| Max. relative humidity           | 95% @ 40°C, non-condensing                                                                                                                                               |
| Size approx.                     | 130 x 52 x 217 mm                                                                                                                                                        |
| Weight approx.                   | 1.480g + options                                                                                                                                                         |
| OS support                       | Microsoft® Windows® 11<br>Microsoft® Windows® 10<br>Microsoft® Windows® 10 IoT Enterprise<br>Linux Ubuntu 20.04 LTS                                                      |



| Ordering Code System | Description | Type                                                | Max. Operating temp |
|----------------------|-------------|-----------------------------------------------------|---------------------|
| BSIP_NUCTA           | eNUC System | INTC6305E   2C   2T   1.8 GHz   15W                 | 0°C to +60°C        |
| BSIP_NUCTC           | eNUC System | I5-1145G7E   4C   8T   1.5 GHz - 4.1 GHz / 12 - 28W | 0°C to +60°C        |
| 4GB-NUCT             | Main Memory | 4 GB                                                |                     |
| 8GB-NUCT             | Main Memory | 8 GB                                                |                     |
| 16GB-NUCT            | Main Memory | 16 GB                                               |                     |
| 32GB-NUCT            | Main Memory | 32 GB                                               |                     |

The information contained in this document has been carefully checked and is believed to be reliable. However, E.E.P.D. GmbH makes no guarantee or warranty concerning the accuracy of said information and shall not be responsible for any loss or damage of what ever nature resulting from the use of, or reliance upon, it. E.E.P.D. does not guarantee that the use of any information contained herein will not infringe upon the patent, trademark, copyright or other rights of third parties, and no patent or other license is implied hereby. AMD and the AMD logo are trademarks of Advanced Micro Devices, Inc. Intel and the Intel logo are trademarks of Intel Corporation or its subsidiaries in the U.S. and/or other countries.

This document does not in any way extend E.E.P.D.'s warranty on any product beyond that set forth in its standard terms and conditions of sale. E.E.P.D. reserves the right to make changes in the products or specifications, or both, presented in this publication at any time and without notice.

LIFE SUPPORT APPLICATIONS: E.E.P.D.'s products are not intended for use as critical components in life support appliances, devices or systems in which the failure of a E.E.P.D. product to perform could be expected to result in personal injury. All mentioned trademarks are registered trademarks of their owner.

© 2022 by E.E.P.D. GmbH. All rights reserved. November 11 2022 – Version 1.0



**E.E.P.D. Electronic Equipment  
Produktion & Distribution GmbH**  
Gewerbering 3  
85258 Weichs - Germany  
Phone +49 8136 2282-0  
Fax +49 8136 2282-109  
Internet: [www.eepd.de](http://www.eepd.de)  
E-Mail: [sales@eepd.de](mailto:sales@eepd.de)