

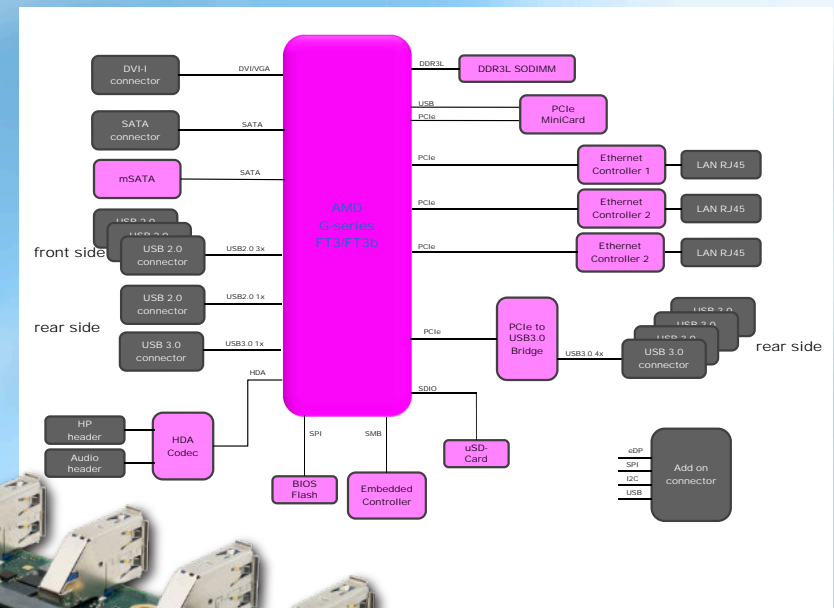
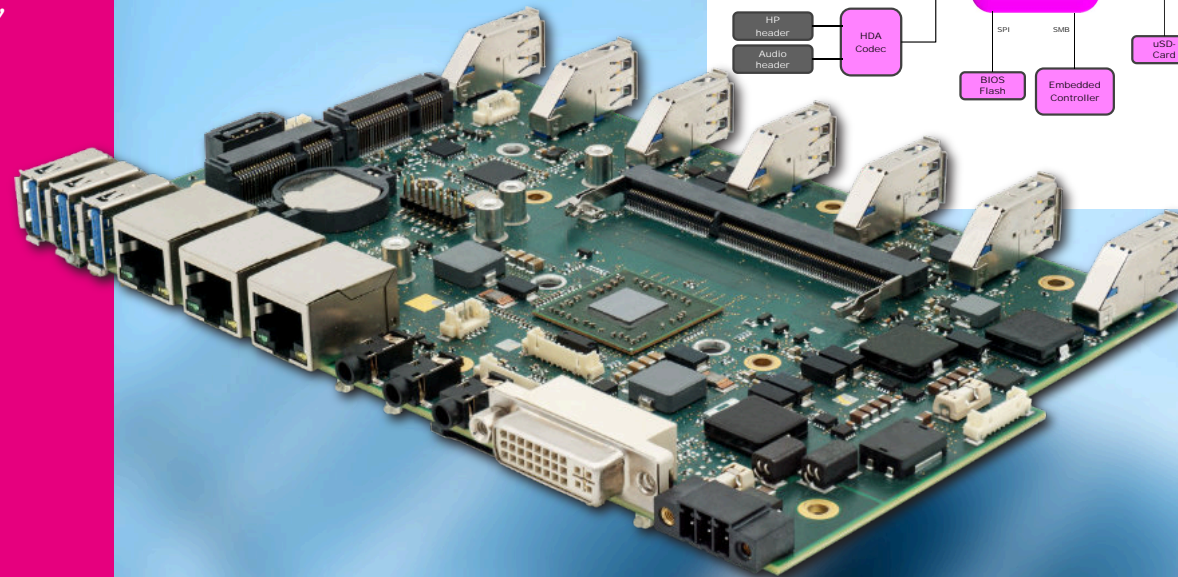
# PROFIVE® GS1



## APPLICATIONS

Designed for fanless applications, the **PROFIVE® GS1** single board computer finds its field of work in stationary and mobile devices:

- \_ Rugged Industrial Systems
  - no rotating parts, low power
- \_ Medical Solutions
- \_ Automatic Control
  - scalable, long term availability,
  - flexible expansion
- \_ Information Systems
- \_ Measurement
- \_ Public Terminal
- \_ Modular Systems



HIGH QUALITY  
MADE IN GERMANY

10 years  
long life  
support<sup>1</sup>

**E.E.P.D.**   
...just embedded!

# Multi-USB 119x186

## SPECIFICATIONS

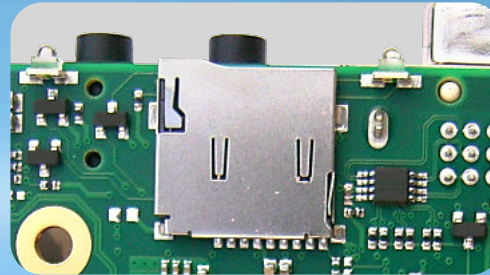
CPU	AMD G-Series eKabini Steppe Eagle (OEM option) <sup>1</sup>
BIOS	UEFI-BIOS
Max. memory	Up to 8 GB DDR3L memory supports 1600 MHz
Gigabit Ethernet	Up to 3 Intel® I210 with IEEE1588
PCI Express® Mini Card	Up to 2 fullsize sockets; 1 prepared with mSATA 1 prepared PCIe/USB (optional half-size)
SD-Card	1 MicroSD-Card socket
Serial ATA	Yes
USB ports	Up to 6 USB 3.0 and 4 USB 2.0
GPIO	Up to 6 ports (3.3 V LV <sub>TTL</sub> level)
DVI-I connector	1 DVI-I with VGA support
Sound	4-channel HDA and headphone connector
Status / Control LEDs	Yes
Power supply	Min. 8 V / Max. 24 V (DC) single supply, 3-pin Wire-To-Board power connector
Max. operating temp.	0°C to +60 °C ambient or 0°C to +70 °C at any point on the surface -40 °C to +85 °C ambient industrial grade (optional)
Max. storage temp.	-20 °C to +85 °C
Max. rel. humidity	95 % @ 40 °C, non-condensing
Fanless	Designed for fanless operation
Size approx.	186 mm x 119 mm
OS support	Microsoft® Windows® 10; Microsoft® Windows® 10 IoT Enterprise; Linux Ubuntu 18.04 LTS

<sup>1</sup>10 years availability according to CPU manufacturers specification

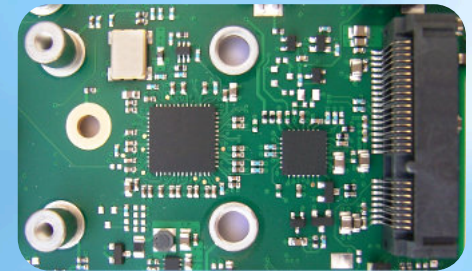
Ordering Code CPU	Description	Type
GS1-A	SBC	GE415GIBJ44HM / 1.5 GHz / GPU HD8330E 500 MHz

### other on request

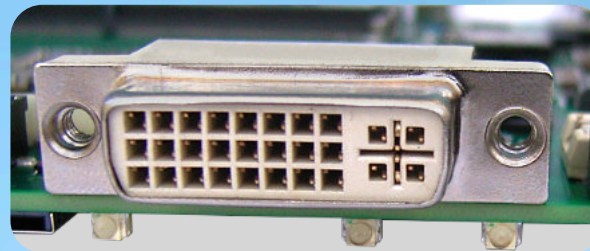
Ordering Code Memory	Description	Size
2GB-GS1X	Main Memory	2GB
4GB-GS1X	Main Memory	4GB
8GB-GS1X	Main Memory	8GB



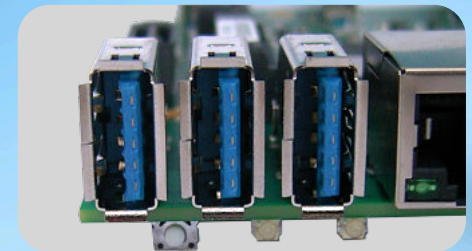
Micro SD-Card socket



PCI Express® Mini Card Socket



DVI-I connector



USB ports

The information contained in this document has been carefully checked and is believed to be reliable. However, E.E.P.D. GmbH makes no guarantee or warranty concerning the accuracy of said information and shall not be responsible for any loss or damage of what ever nature resulting from the use of, or reliance upon, it.

E.E.P.D. does not guarantee that the use of any information contained herein will not infringe upon the patent, trademark, copyright or other rights of third parties, and no patent or other license is implied hereby. AMD and AMD logo are trademarks of Advanced Micro Devices, Inc.

This document does not in any way extend E.E.P.D.'s warranty on any product beyond that set forth in its standard terms and conditions of sale. E.E.P.D. reserves the right to make changes in the products or specifications, or both, presented in this publication at any time and without notice.

#### LIFE SUPPORT APPLICATIONS

E.E.P.D.'s products are not intended for use as critical components in life support appliances, devices or systems in which the failure of a E.E.P.D. product to perform could be expected to result in personal injury. All mentioned trademarks are registered trademarks of their owner.

©2024 by E.E.P.D. GmbH. All rights reserved. November 28<sup>th</sup> 2024 - Version 2.8



**E.E.P.D. Electronic Equipment  
Produktion & Distribution GmbH**  
Gewerbering 3  
85258 Weichs - Germany  
Phone +49 8136 2282-0  
Internet: [www.eepd.de](http://www.eepd.de)  
E-Mail: [sales@eepd.de](mailto:sales@eepd.de)